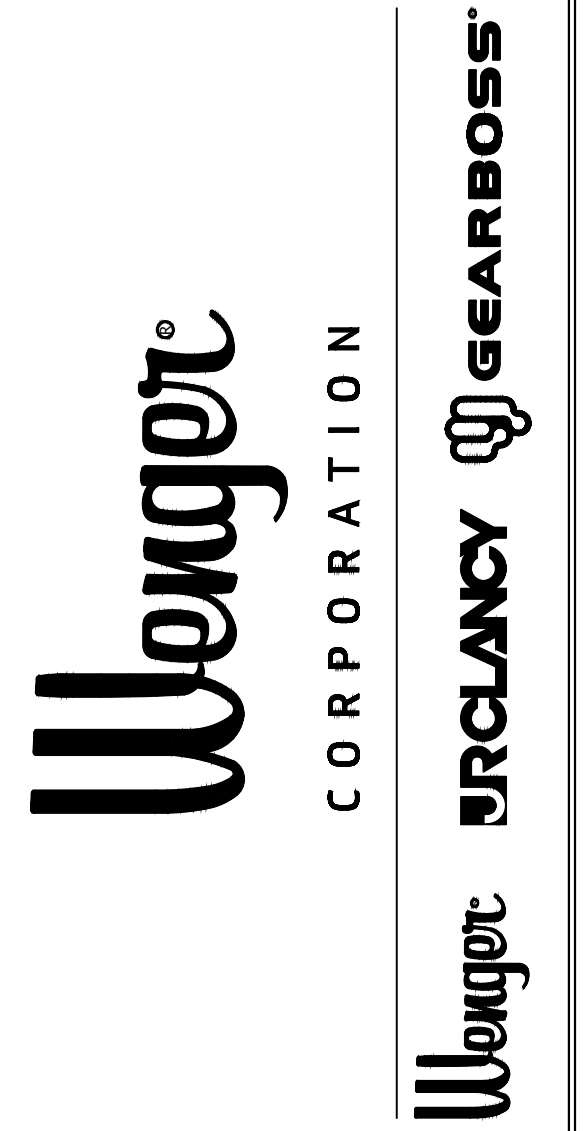
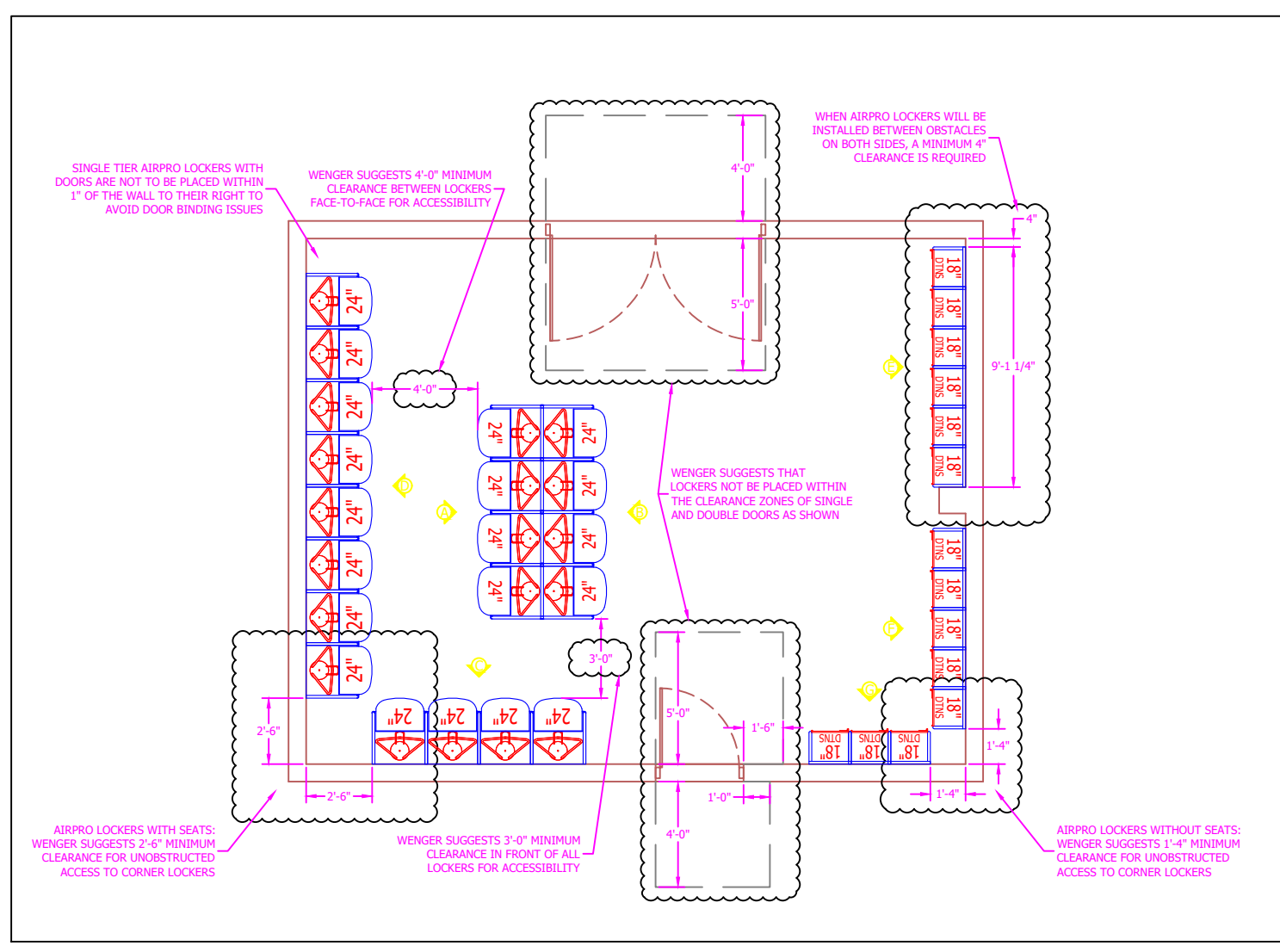


REV	DATE	DRN BY	REVISION DESCRIPTION
*			

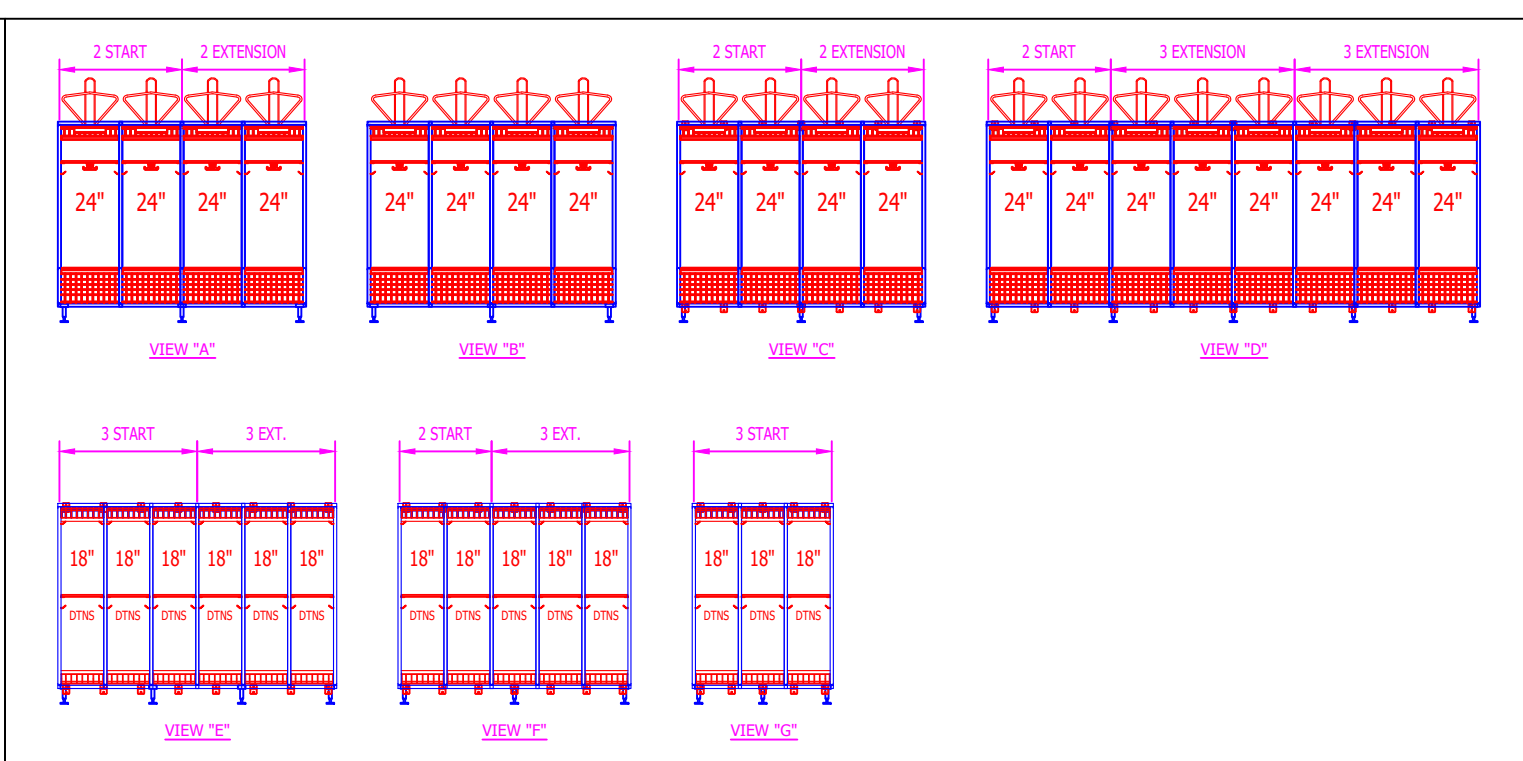


THIS DRAWING AND RELATED SPECIFICATIONS ARE CONFIDENTIAL AND PROPRIETARY TO THE WENGER CORPORATION. COPYRIGHT 2023 WENGER CORPORATION ALL RIGHTS RESERVED

GEARBOSS AIRPRO LOCKER LAYOUT SUGGESTIONS



EXAMPLE ELEVATION VIEWS



GENERAL NOTES

- AIRPRO LOCKER NOTES:**
- VERIFICATION OF BUILDING DIMENSIONS TO BE CONFIRMED BY GENERAL CONTRACTOR PRIOR TO CONSTRUCTION. PRODUCT IS PREFABRICATED IN STANDARD SIZES.
 - THE LOCKER ROOMS AND STORAGE AREAS MUST AT ALL TIMES MAINTAIN A CONSISTENT CLIMATE CONTROL. THE TEMPERATURE SHOULD BE FROM 60° FAHRENHEIT (15° CELSIUS) TO 80° FAHRENHEIT (27° CELSIUS) AND THE HUMIDITY LEVEL SHOULD NOT EXCEED 60%.
 - WALL/FLOOR AREA SPECIFIED FOR LOCKER INSTALLATION MUST BE FREE OF SURFACE MOUNTED OBSTRUCTIONS SUCH AS LIGHT SWITCHES, OUTLETS, HVAC, PIPES OR CONDUIT, WINDOW TRIM, CLOCKS, SIGNS, ETC.
 - ALL WALLS SPECIFIED FOR MOUNTING LOCKERS MUST BE STRONG ENOUGH TO SUPPORT THE WALL-HUNG DESIGN. LOADING ON WALLS INCLUDES THE WEIGHT OF THE LOCKERS PLUS THE WEIGHT OF A 250 LB ATHLETE SITTING ON EACH SEAT (POSSIBLE 580 FT-LB MOMENT PER LOCKER). WALLS THAT ARE UNABLE TO SUPPORT THIS LOAD WILL REQUIRE WALL REINFORCEMENT BY OTHERS.
 - THE FASTENERS USED TO ATTACH THE LOCKERS TO THE WALL MUST FOLLOW THE RECOMMENDATIONS IN THE LOCKER INSTALLATION MANUAL (SEE INSTALLATION MANUAL).
 - AN ASSEMBLY AREA (AT LEAST 500 SQ. FT) MUST BE AVAILABLE IN OR NEAR (WITHIN 100 FT) THE LOCKER INSTALLATION AREA FOR THE DURATION OF THE INSTALLATION.
 - LOCKER ROOM FLOOR(S) MUST BE CLEARED OF DEBRIS OR EQUIPMENT PRIOR TO LOCKER INSTALLATION.
 - LEG AND WALL MOUNT BRACKET LOCATIONS SHOWN ARE APPROXIMATE.
 - UNFINISHED FLOOR, TILE OR EPOXY COATED CONCRETE FLOORING IS ACCEPTABLE PRIOR TO LOCKER INSTALLATION. ANY ADDITIONAL FLOOR COVERINGS ARE TO BE INSTALLED AFTER THE LOCKERS TO AVOID INTERFERENCE WITH THE LEGS.
 - IF THE LOCKER HAS THE PAD DRYER ACCESSORY INSTALLED, WENGER SUGGESTS 30" OF CLEARANCE BETWEEN THE TOP OF THE LOCKER AND THE CEILING/SOFFIT FOR ACCESSIBILITY.
 - THE INSTALLATION SITE MUST BE LEVEL - NO MORE THAN 3/4" VARIATION ACROSS EACH BANK OF LOCKERS.

SINGLE TIER WALL MOUNTED

SINGLE TIER ISLAND MOUNTED

DOUBLE TIER WITH SEAT WALL MOUNTED

DOUBLE TIER WITH SEAT ISLAND MOUNTED

DOUBLE TIER NO SEAT WALL MOUNTED

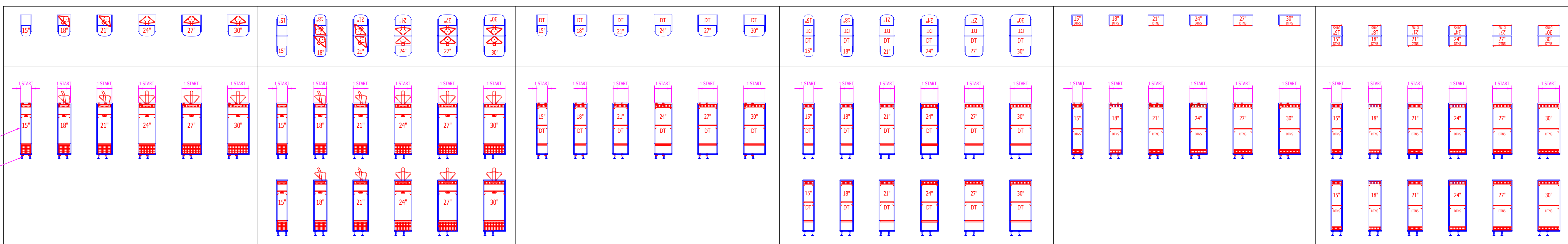
DOUBLE TIER NO SEAT ISLAND MOUNTED

PLAN VIEW

- NOTES:
- SELECT BLOCK, THEN USE THE VISIBILITY PARAMETER (BLUE ARROW) TO SELECT THE CORRESPONDING QUANTITY.
 - USE HANDLE TO SELECT THE APPROPRIATE QUANTITY.
 - IF THE PAD DRYER ACCESSORY IS NOT REQUIRED, TURN OFF THE DRYER PAD DEVICE.
 - A MINIMUM OF 4" TOTAL LOCKERS IS REQUIRED FOR AN ISLAND INSTALLATION.

ELEVATION VIEW

- NOTES:
- THE ELEVATION VIEW CONTAINS 2 BLOCKS WHICH MUST BE USED IN UNISON TO:
 1. THE ELEVATION VIEW.
 2. SELECT THE LOCKER BLOCK, THEN USE THE VISIBILITY PARAMETER (BLUE ARROW) TO SELECT THE CORRESPONDING QUANTITY.
 3. SELECT THE LEVELING FOOT BLOCK, THEN USE THE VISIBILITY PARAMETER (BLUE ARROW) TO SELECT THE APPROPRIATE QUANTITY.
 4. FOR THE DOUBLE TIER BLOCK, WENGER SUGGESTS 2" OF MINIMUM CLEARANCE IN FRONT OF ALL LOCKERS FOR ACCESSIBILITY.
 5. SELECT THE LEVELING FOOT BLOCK, THEN USE THE STRETCH PARAMETER (BLUE ARROW) TO ADJUST THE BLOCK TO TOUCH THE BOTTOM OF THE LOCKER BANK.
 - IF THE PAD DRYER ACCESSORY IS NOT REQUIRED, TURN OFF LATER "LADDER PAD ENTRY".



SINGLE TIER SIDE PROFILE

DOUBLE TIER WITH SEAT SIDE PROFILE

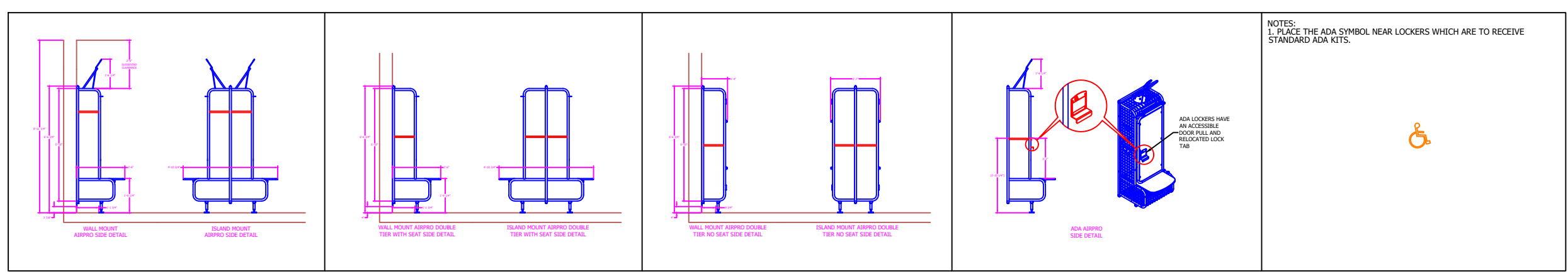
DOUBLE TIER NO SEAT SIDE PROFILE

SINGLE TIER ADA

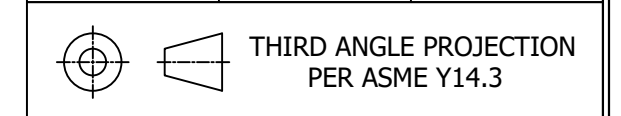
ADA SYMBOL

DETAIL VIEWS

- NOTES:
- SELECT BLOCK, THEN USE THE VISIBILITY PARAMETER (BLUE ARROW) TO SELECT THE APPROPRIATE DETAIL.



FINISH:	WEIGHT:	ORDER:
-	-	-



DRAWING TITLE:

PROJECT/OPPORTUNITY NUMBER:

SCALE: DO NOT SCALE DRAWING
DATE DRN BY CHK BY APVD BY

DRAWING NUMBER: | REV:

D Size TB-OWA